



Stannington Crescent

Totton, SOUTHAMPTON, SO40 3QA

**Lovely, modern 2
Bedroom apartment**

£950 pcm + security deposit

PARKERS



Stannington Crescent, Totton, Hampshire, SO40 3QAS

Description

- 2 bedrooms
- Modern bathroom with shower
- Double glazing
- 1st floor position
- Available 31 March, possibly sooner
- Modern kitchen
- Lounge area
- Gas Central Heating
- EPC rating: C
- PROPERTY REFERENCE: 1000

Another Parkers' exclusive! Our properties are not available elsewhere, so contact Parkers Lettings, The Specialist Letting Agent for expert information and advice.

A beautifully presented 2-bedroom first floor apartment, situated in this small, modern development on the edge of the town centre. The property is unfurnished with a modern re-fitted kitchen, white bathroom suite complete with shower, and French doors from the Lounge opening to Juliette Balcony, making the most of the more clement weather.

The property is offered with attractive window dressings, light fittings and solid oak flooring to the lounge and hallway areas.

Utilities: The in-going tenant is responsible for gas, electric, water and council tax bills, in addition to any other service to which they contract.

Deposit: A deposit of 5 x weeks rent is payable.

Pets: We regret that pets are not permitted.

Energy Performance Rating: 'C'.

Council Tax: Band 'B'. New Forest District Council (Totton & Eling Area) £1,744.21 for year 2024 / 2025.

Locality: Totton

Some 3 miles West of Southampton, what used to be the largest village in England has grown to a population of nearly 30,000. However Totton and Eling is still considered a friendly place to live, with excellent shopping and leisure facilities, good schooling, from Infant to Secondary, and within a short drive of Lepe Country Park and a pebble beach at Calshot. Totton is served by the M27 (junctions 2 and 3) and a mainline Railway Station.

Availability: Available 31 March 2025, possibly a week or so earlier. Please note that an initial term of six months will apply. A reservation for this property can only be made upon the signing of an Agreement to Lease and payment of the holding deposit, equivalent to 1 x week's rent. Our staff are unable to 'keep' or 'hold' a property before this legally-required process has been completed.



For further information or to view: Please contact sole agents, Parkers Lettings Ltd on 023 8086 8578, quoting property reference 1000.

Directions: Starting from our offices at 1 Salisbury Road Arcade, Totton, Hampshire, SO40 3SG.

Total : 0.1 miles (1mins)

1. Drive northwest. (0.08 miles)
2. Turn left onto Salisbury Road/A36. (0.02 miles)
3. You have arrived at your destination. (0.00 miles)

Hours of business: We're open for business Monday - Friday 9.15am - 5.00pm. Late Wednesday 6.30pm. Saturday, our office is open 10.15am - 1.00pm and 2.00pm - 5.00pm for viewings only. Sunday, Closed.

A bit about us: Here at Parkers, we know that you have many options to consider when it comes to choosing an agent, but we like to think that we offer you more than your standard agent. We're local specialists so when you want lettings, sales and property management services in Totton, Romsey and Southampton, we are second to none. We take immense pride in supporting the local community and playing our part in helping people take the next step in the market. Whether you need advice on where and when to buy-to-let, where to rent or you require assistance in reaching out to prospective buyers and tenants, we can help you. We place a strong emphasis on customer relationships, and we take the time to find out what you want to achieve.

If you're looking to sell your rented property, we're uniquely placed to help with our many hundreds of local landlords. By selling to another investor, it is often possible to keep your tenant in place, ensuring you receive rental income up to the very last day of your ownership, with the buyer receiving a return on their investment from the very next day. Our marketing comprises the best mix of technology, with video tours, floorplans and internet advertising, together with a nod to our heritage with good old fashioned estate agency practices.

We welcome all applicants whether privately funded or in receipt of housing benefit. A minimum household income threshold of 2.5 x the annual rent of the property will apply. This can include paid employment, a pension, investment income, Universal Credit, Child Benefit and child maintenance payments (where an order has been made by The Child Maintenance Service only. Private arrangements of child maintenance payments are not accepted).

For example, if a rent of £800 is agreed, then a minimum household income of £24,000 is required:
(£800 x 12 months) = £9,600 per annum. (£9,600 x by 2.5) = £24,000 per annum.

All applicants must have a clean credit record, and be free of County Court Judgements (CCJs), bankruptcy and Individual Voluntary Arrangements (IVAs).

Some of our landlords' lender or building insurer restrict letting to applicants in receipt of Housing Benefit. Some lenders, such as Cooperative, Barclays are removing this restriction, but for many others it still applies. Please feel free to contact us for further information on this property.



Accommodation Comprises:

Hallway : 13.22' x 3.64' (4.03m x 1.11m)

Spacious and welcoming Hallway.

Living Room / Kitchen Area : 10.30' x 18.50' (3.14m x 5.64m)

Living room

Solid oak flooring. Double-glazed French doors open on to Juliette Balcony. Open plan to:

Kitchen area

A modern, re-fitted kitchen with integral oven, hob and extractor hood.

Ample storage cupboards and work-surface space.

Bedroom 1 : 8.27' x 14.17' (2.52m x 4.32m)

Light and bright main bedroom, with built-in wardrobes.

Bedroom 2 : 6.66' x 16.11' (2.03m x 4.91m)

Good size second bedroom, again with built-in wardrobe.

Bathroom : 7.84' x 5.54' (2.39m x 1.69m)

A modern, refitted white-coloured suite with shower over the bath wash-basin and WC.

External

Communal grounds to the front of the building. Bicycle store. Ample on- road parking available nearby.

Tenant Fees

From 01/06/2019

Tenants (Housing Act tenancies)

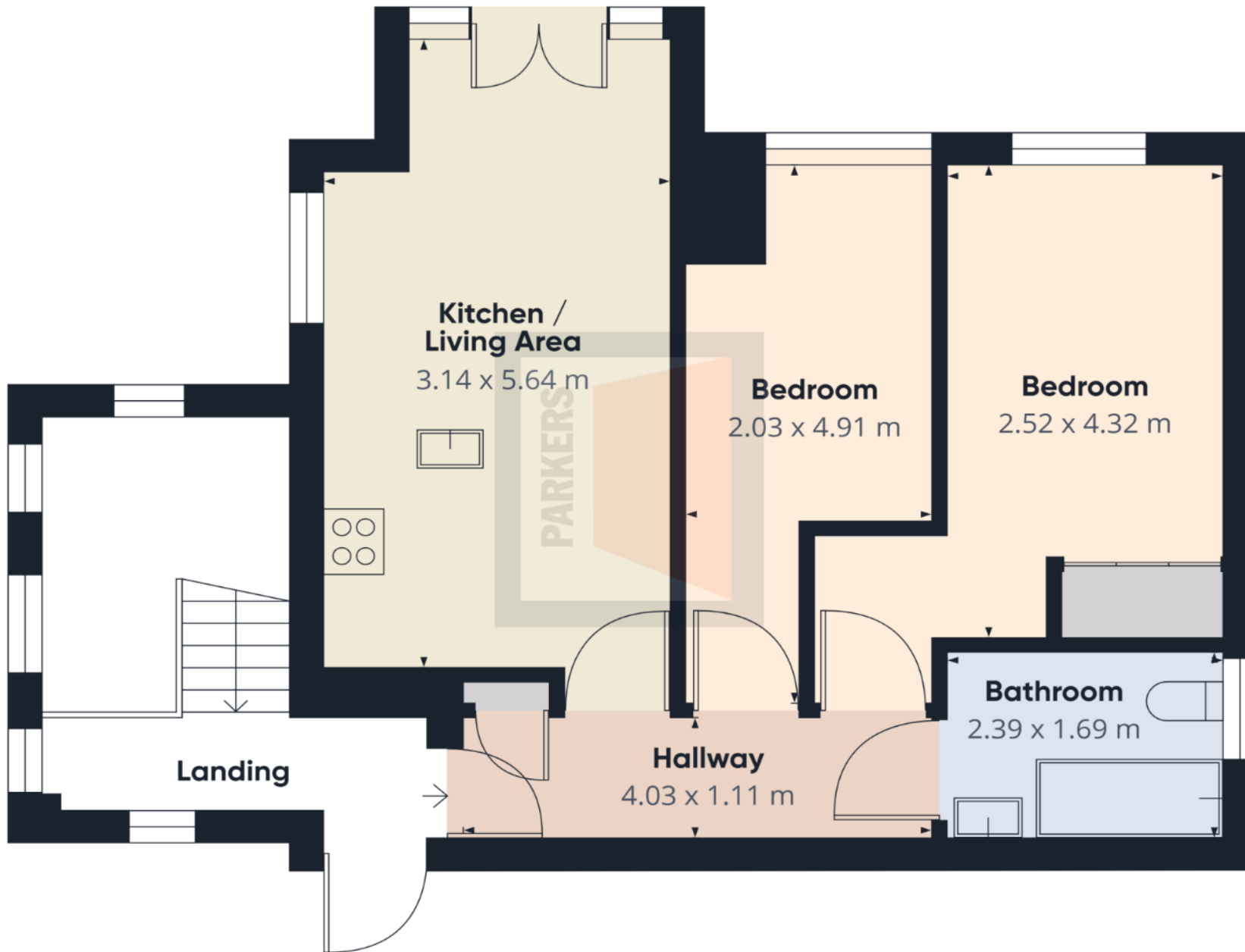
Permitted default payments:

Loss of keys / security device: Cost of replacement only, plus agent's reasonable costs in arranging.

Variation, assignment or novation to the lease: The greater of £50 including VAT or the reasonable costs.

Rent arrears: Interest accrues from day one, if the rent is not paid within 14 days of the due date. The interest is limited to 3% over base rate. Early release of tenancy: £780 including VAT.

Parkers Lettings Ltd and members of The Property Redress Scheme and Client Money Protect.

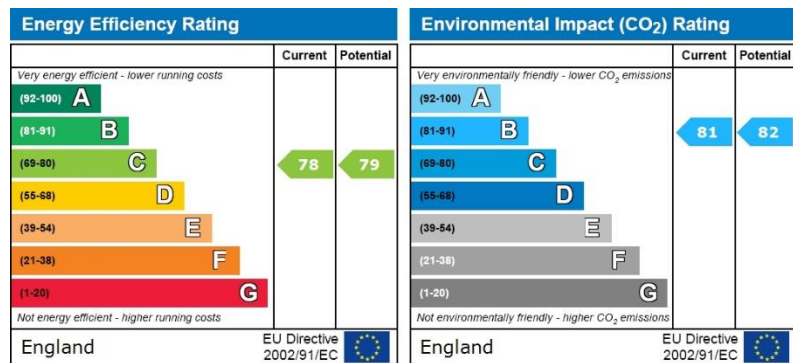


Approximate total area⁽¹⁾
47.16 m²

(1) Excluding balconies and terraces

While every attempt has been made to ensure accuracy, all measurements are approximate, not to scale. This floor plan is for illustrative purposes only.

GIRAFFE360



1, Salisbury Road Arcade, Totton
 SOUTHAMPTON, SO40 3SG
telephone : 023 8086 8578
 email : info@parkerslettings.com
parkerslettings.com

THE PROPERTY MISDESCRIPTIONS ACT 1991: Any areas, measurements or distances are approximate. Land measurements are provided by the vendor and buyers are advised to obtain verification from their solicitor. The text, photographs and plans are for guidance only and are not necessarily comprehensive. Items shown in the property photographs are not included unless specifically mentioned within the sales particulars although they may be available by separate negotiation. Parkers Lettings Limited cannot verify that the fixtures and fittings, equipment or services are in working order or fit for the purpose and buyers are advised to obtain verification from their solicitor. The tenure of a property is based upon information supplied by the seller and buyers are advised to obtain verification from their solicitor.