



Durley Crescent

Studio £725 pcm + security deposit

Ashurst Bridge, Southampton Totton





Durley Crescent

Description

- Studio Flat
- 1 Bathroom
- Parking
- P.Built
- 1 Reception
- Private garden
- Unfurnished
- Available Now

Another Parkers' exclusive! Our properties are not available elsewhere, so contact Parkers Lettings, The Specialist Letting Agent for expert information and advice.

Available to let is this well-presented ground floor studio in the popular area of Ashurst Bridge. This is a great studio flat with the layout making it easy to configure a separate lounge and bedroom area. Offered unfurnished with a private garden and private parking space.

Utilities: The in-going tenant is responsible for gas, electric, water and council tax bills, in addition to any other service to which they contract.

Deposit: A deposit of 5 x weeks rent is payable.

Pets: We regret that pets are not permitted.

Energy Performance Rating: 'TBC'.

Council Tax: Band 'A'. New Forest District Council (Totton & Eling Area) £1,425.93 for year 2023 / 2024.

Locality:

Totton:

Some 3 miles West of Southampton, what used to be the largest village in England has grown to a population of nearly 30,000. However Totton and Eling is still considered a friendly place to live, with excellent shopping and leisure facilities, good schooling, from Infant to Secondary, and within a short drive of Lepe Country Park and a pebble beach at Calshot. Totton is served by the M27 (junctions 2 and 3) and a mainline Railway Station.

Availability: Available 5 April 2024. Please note that an initial term of six months will apply. A reservation for this property can only be made upon the signing of an Agreement to Lease and payment of the holding deposit, equivalent to 1 x week's rent. Our staff are unable to 'keep' or 'hold' a property before this legally-required process has been completed.

For further information or to view, please contact sole agents, Parkers Lettings Ltd on 023 8086 8578, quoting property reference 107.





Accommodation Comprises:

Entrance Porch
Leading to studio room.

Studio Room
A great size studio room, with the layout making it easy to configure separate lounge / bedroom areas. Built-in storage cupboard.

Kitchen
A good size kitchen, separate from the studio room. Plenty of storage cupboards.

Utility Area
A very handy utility area, leading through to the bathroom. Space and plumbing available for white goods. Built-in storage.

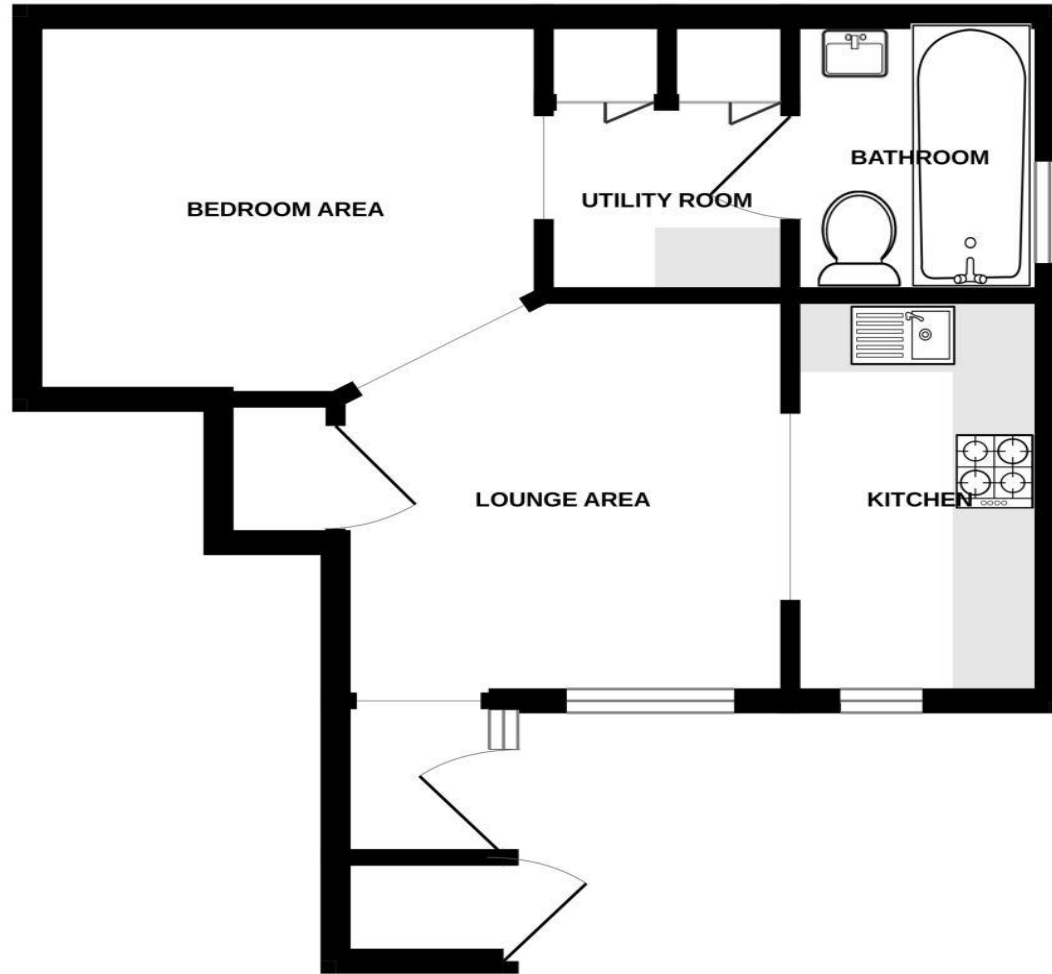
Bathroom
Three piece bathroom suite, with shower off tap.

External
A good size private garden to the front and side of the property.

Parking
One private, numbered parking space.



GROUND FLOOR





Directions: Starting from our offices at 1 Salisbury Road Arcade, Totton, Hampshire, SO40 3SG.

Starting from SO40 3SG. Total : 3 miles (9mins)

1. Drive northwest. (0.00 miles)
2. Turn right onto Salisbury Road/A36. (0.0 miles)
3. Enter the roundabout and take the 3rd exit onto Ringwood Road/A336. (0.0 miles)
4. Enter the roundabout and take the 2nd exit onto Ringwood Road/A336. (1.0 miles)
5. Enter the roundabout and take the 2nd exit onto A336. (0.0 miles)
6. Enter the roundabout and take the 1st exit onto Fletchwood Road. (0.0 miles)
7. Enter the roundabout and take the 1st exit onto A326. (1.0 miles)
8. Enter the roundabout and take the 1st exit onto Cocklydown Lane. (0.0 miles)
9. Turn left onto Ibbotson Way. (0.0 miles)
10. Turn right onto Durley Crescent. (0.00 miles)
11. Your destination is on the left. (0.00 miles)



1, Salisbury Road Arcade, Totton
SOUTHAMPTON, SO40 3SG

telephone : 023 8086 8578

email : info@parkersletttings.com

parkersletttings.com

Our Fees

We require a Holding Deposit equal to 1 week's rent (approx £167) to secure the property. This holding deposit will be used towards the security deposit and rent in advance if the tenancy proceeds.

This property requires a Security Deposit of 5 week's rent (approx £837)

The following fees may also be charged during your tenancy

Lost/replacement keys/security fobs
Rent arrears fees/charges
Change of tenancy

THE PROPERTY MISDESCRIPTIONS ACT 1991: Any areas, measurements or distances are approximate. Land measurements are provided by the vendor and buyers are advised to obtain verification from their solicitor. The text, photographs and plans are for guidance only and are not necessarily comprehensive. Items shown in the property photographs are not included unless specifically mentioned within the sales particulars although they may be available by separate negotiation. Parkers Lettings Limited cannot verify that the fixtures and fittings, equipment or services are in working order or fit for the purpose and buyers are advised to obtain verification from their solicitor. The tenure of a property is based upon information supplied by the seller and buyers are advised to obtain verification from their solicitor.