



Edinburgh Court

1 Bedroom ground floor flat

£750 pcm + security deposit

Regents Park Road, Southampton





Edinburgh Court, 9 Regents Park Road, Southampton, SO15 8PH

Description

- Good decoration
- Ground floor
- Water charges included
- EPC Rating: C
- PROPERTY REF: 525
- Laminate flooring
- White goods included
- Allocated parking
- Available 23 May 2025

Another Parkers' exclusive! Our properties are not available elsewhere, so contact Parkers Lettings, The Specialist Letting Agent for expert information and advice.

A modern ground floor one bedroom flat, well-presented and with wood laminate flooring. All white goods are to remain, and the rent includes the water charge.

Utilities: The in-going tenant is responsible for, electric and council tax bills, in addition to any other service to which they contract.

Deposit: A deposit of 5 x weeks rent is payable.

Pets: We regret that pets are not permitted.

Energy Performance Rating: 'C'.

Council Tax: Band 'A'. Southampton City Council. £1,510.96 for year 2025 / 2026.

Location: Southampton

A port city, with a rich and diverse history dating back to pre-Norman times. A modern city centre, where the historic Bargate and medieval city walls mix with today's busy shopping centres, cafes, restaurants and night-life. University Hospital Southampton NHS Foundation is one of the city's biggest employers, providing care and specialist services to more than 3 million people in the South of England. Southampton pulls many thousands of people the annual boat show, hosted at Mayflower Park, echoing the City's rich maritime history. Southampton Football Club's home, St. Mary's is located close to the City Centre, regularly attracting an attendance of 30,000 or so spectators.

Availability: Available from the 23 May 2025. Please note that an initial term of six months will apply. A reservation for this property can only be made upon the signing of an Agreement to Lease and payment of the holding deposit, equivalent to 1 x week's rent. Our staff are unable to 'keep' or 'hold' a property before this legally-required process has been completed.

For further information or to view: Please contact sole agents, Parkers Lettings Ltd on 023 8086 8578, quoting property reference 525.

Hours of business: We're open for business Monday to Friday 9.00am to 4.30pm.

Directions: Starting from our office at SO40 3SG. Total : 2.6 miles (11mins)

1. Drive northwest. (0.08 miles)
2. Turn right onto Salisbury Road/A36. (0.1 miles)
3. Enter the roundabout and take the 2nd exit onto Commercial Road/A36. (0.4 miles)
4. Stay straight to take the A35 ramp. (1.7 miles)
5. Keep left to take A33/Millbrook Road West. (0.05 miles)
6. Turn left onto Regents Park Road. (0.06 miles)
7. Turn left onto Castle Court. (0.01 miles)
8. Your destination is on the right. (0.00 miles)

A bit about us: Here at Parkers, we know that you have many options to consider when it comes to choosing an agent, but we like to think that we offer you more than your standard agent.

We're local specialists so when you want lettings, sales and property management services in Totton, Romsey and Southampton, we are second to none. We take immense pride in supporting the local community and playing our part in helping people take the next step in the market.

Whether you need advice on where and when to buy-to-let, where to rent or you require assistance in reaching out to prospective buyers and tenants, we can help you. We place a strong emphasis on customer relationships, and we take the time to find out what you want to achieve.

If you're looking to sell your rented property, we're uniquely placed to help with our many hundreds of local landlords. By selling to another investor, it is often possible to keep your tenant in place, ensuring you receive rental income up to the very last day of your ownership, with the buyer receiving a return on their investment from the very next day. Our marketing comprises the best mix of technology, with video tours, floorplans and internet advertising, together with a nod to our heritage with good old fashioned estate agency practices.

We welcome all applicants whether privately funded or in receipt of housing benefit. A minimum household income threshold of 2.5 x the annual rent of the property will apply. This can include paid employment, a pension, investment income, Universal Credit, Child Benefit and child maintenance payments (where an order has been made by The Child Maintenance Service only. Private arrangements of child maintenance payments are not accepted).

For example, if a rent of £800 is agreed, then a minimum household income of £24,000 is required:

$(£800 \times 12 \text{ months}) = £9,600 \text{ per annum. } (£9,600 \times \text{by } 2.5) = £24,000 \text{ per annum.}$

All applicants must have a clean credit record, and be free of County Court Judgements (CCJs), bankruptcy and Individual Voluntary Arrangements (IVAs).

Some of our landlords' lender or building insurer restrict letting to applicants in receipt of Housing Benefit. Some lenders, such as Cooperative, Barclays are removing this restriction, but for many others it still applies. Please feel free to contact us for further information on this property.



Accommodation Comprises:

Entrance Hall : 9.09' x 3.15' (2.77m x 0.96m)

Living/Dining Room : 14.30' x 9.88' (4.36m x 3.01m)

Kitchen : 10.20' x 9.61' (3.11m x 2.93m)

Bedroom : 10.20' x 9.61' (3.11m x 2.93m)

Bathroom : 6.79' x 5.41' (2.07m x 1.65m)

Parking

Allocated parking for 1 car.

Tenant Fees

From 01/06/2019

Tenants (Housing Act tenancies)

Permitted default payments:

Loss of keys / security device: Cost of replacement only, plus agent's reasonable costs in arranging.

Variation, assignment or novation to the lease: The greater of £50 including VAT or the reasonable costs.

Rent arrears: Interest accrues from day one, if the rent is not paid within 14 days of the due date.

The interest is limited to 3% over base rate.

Early release of tenancy: £780 including VAT.

Parkers Lettings Ltd and members of The Property Redress Scheme and Client Money Protect.



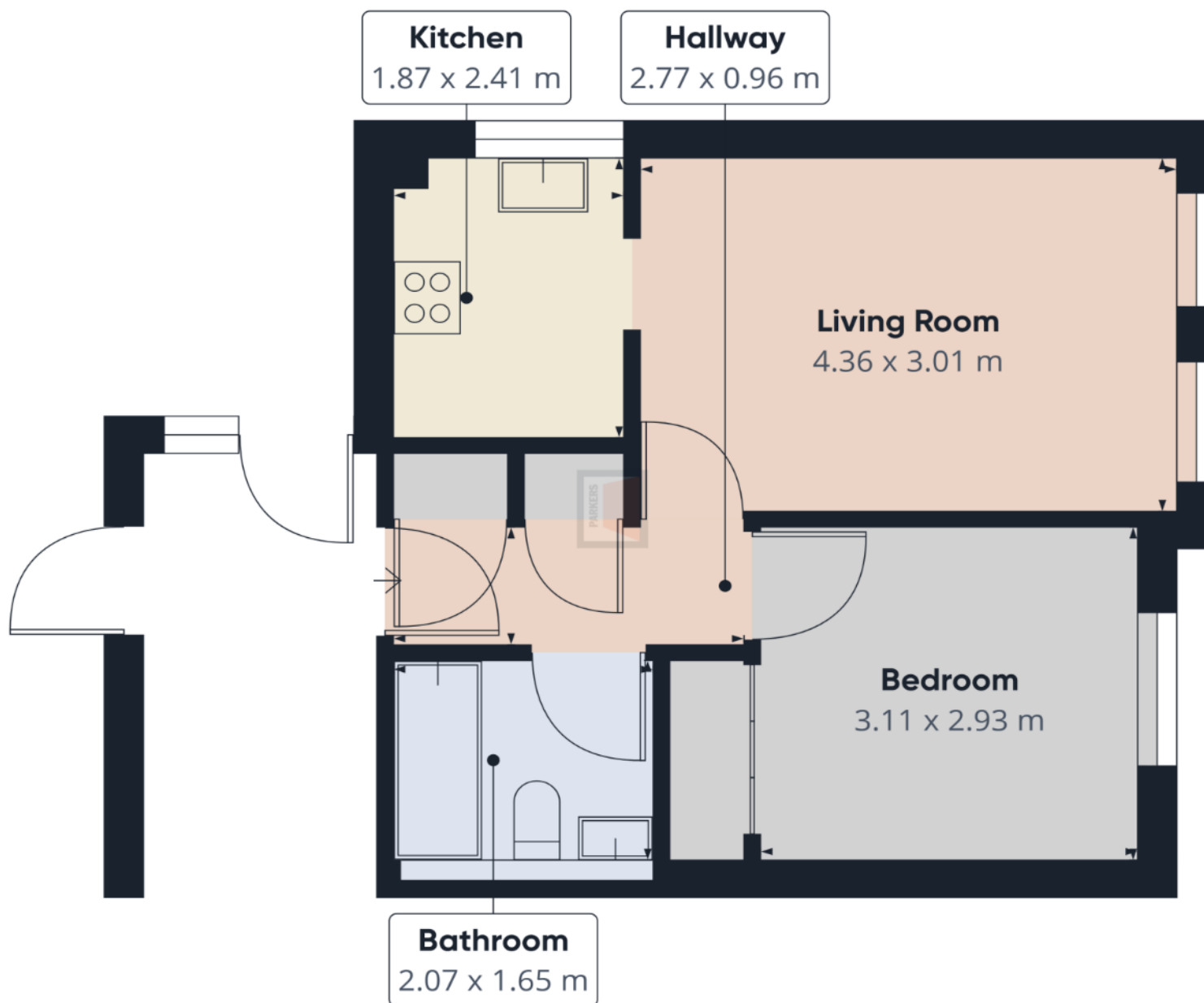


Approximate total area⁽¹⁾
36.11 m²

(1) Excluding balconies and terraces

While every attempt has been made to ensure accuracy, all measurements are approximate, not to scale. This floor plan is for illustrative purposes only.

GIRAFFE360



Certificate Number : 0380-2637-2260-2927-8715

Score	Energy rating	Current	Potential
92+	A		
81-91	B		
69-80	C	71	78
55-68	D		
39-54	E		
21-38	F		
1-20	G		

<https://find-energy-certificate.digital.communities.gov.uk/energy-certificate/0380-2637-2260-2927-8715>



1, Salisbury Road Arcade, Totton
SOUTHAMPTON, SO40 3SG
telephone : 023 8086 8578
email : info@parkersletttings.com
parkersletttings.com

THE PROPERTY MISDESCRIPTIONS ACT 1991: Any areas, measurements or distances are approximate. Land measurements are provided by the vendor and buyers are advised to obtain verification from their solicitor. The text, photographs and plans are for guidance only and are not necessarily comprehensive. Items shown in the property photographs are not included unless specifically mentioned within the sales particulars although they may be available by separate negotiation. Parkers Lettings Limited cannot verify that the fixtures and fittings, equipment or services are in working order or fit for the purpose and buyers are advised to obtain verification from their solicitor. The tenure of a property is based upon information supplied by the seller and buyers are advised to obtain verification from their solicitor.